

## **EXCEPTIONAL 3 BEDROOM, 2 BATHROOM VILLAS FOR SALE ON THE SILVER COAST, PORTUGAL – 3 REMAIN FOR SALE**



**Updated September 18, 2009**

**VILLAS AT RIBAMAR, OESTE REGION, SILVER COAST, PORTUGAL**

**JUST 4 STUNNING VILLAS AVAILABLE OFF PLAN IN SILVER COAST LOCATION**

**3 BEDROOM, 2 BATHROOM (sea views) units from ONLY 185,000 EUROS (SEMI-DETACHED) TO 220,000 EUROS DETACHED.**

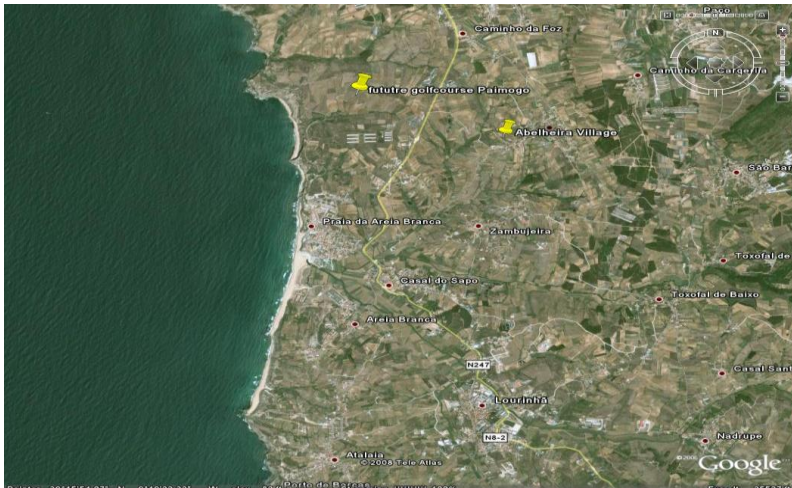
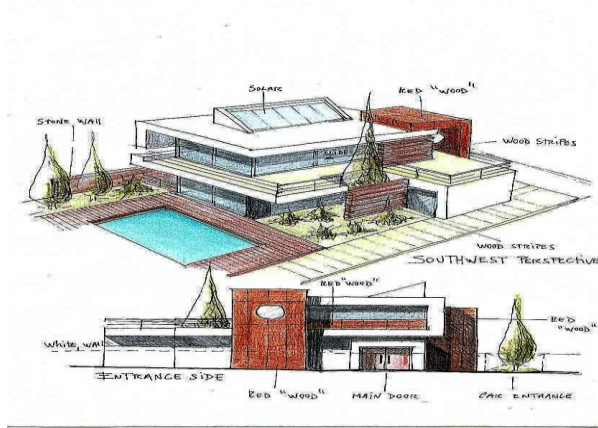
### **PROJECT RIBAMAR**

- Prices include all white goods,
- Under floor heating and central vacuum system
- Fully equipped Italian kitchen with electrical appliances
- Designer bathrooms
- Communal pool (villas with optional private pool)
- Communal tennis court
- Solar energy (for heated water)
- Pre-installation for aircon and alarm

Availability is subject to change at any time; a property remains available until a reservation deposit is paid.

3D FLOOR IMAGES LINK <http://content.metropix.com/p/1233266>

**OTHER PROJECTS FROM THIS BOUTIQUE DEVELOPER**



**About the Oeste Region**  
 The Oeste (West) Region of Portugal, just an hour north of Lisbon, is an area of protected and outstanding natural beauty with spectacular cliffs, pristine beaches and local towns and villages steeped in history. Sample mouth-watering local cuisine, in particular the seafood - accompanied of course, by the Region's excellent local wine. This Region truly has something for everyone.

## Oeste Attractions:

- Golf
- Tennis
- Surfing
- Diving
- Health/Beauty
- Restaurants
- Local Heritage
- History
- Nature
- Unspoilt



Porto Dinheiro is about 5 minutes from the main town of Lourinha and boasts a long wide sandy beach which leads away from the village with it's small selection of bars and restaurants. Lourinha offers a much larger choice of establishments with opportunities nearby for horse riding, tennis, mountain biking, game shooting, and go-karting, all in addition to the obvious choice of area for the golfing fraternity. Lisbon International Airport is only about 45 minutes away and is serviced daily from many UK airports by the low cost airlines which makes the whole area accessible for 12 months of the year for the ever growing golfing holiday market. With good rental demand and many years of expected capital growth the Oeste region is a prime location for property investment.

## SITE PLAN





Other areas within the Oeste region include:

### **Berlenga Islands**

The Berlenga Islands are situated 12Km from Cape Carvoeiro in a small archipelago called the Berlengas. Berlenga Island itself, filled with mystery and beauty, is a nature reserve for the nesting of various species of birds and the preservation of various reptiles and other animals. You will also find there typical plants and flowers endemic to Portugal . Laced with grottoes and coves, the Berlenga Islands are an hour's journey by boat from Peniche. It also has a 17th-century fort. The island is famous for its number of diving locations.

### **Caldas Da Rainha**

The Estremadura on the lower half of the Costa De Lisboa (Lisbon Coast), is the alternative Algarve in every sense of the word. Discerning visitors who were familiar with the Algarve twenty years ago will find much that is familiar here. Sixty miles north of Lisbon is an area totally unspoiled, which boasts quite an extraordinary wealth of architecture and fascinating towns. The beaches equal any in the Algarve, and the countryside is open and undeveloped with fertile rolling hills just as beautiful as the famous Minho ranges.

### **Obidos**



Once the wedding present of a queen, the preserved medieval town of Óbidos lying 100 km north of Lisbon is without doubt one of Portugal's most classic walled settlements.

Walking the ramparts, visitors can enjoy views of windmills, vineyards, and surrounding farmlands. In the residential area below, narrow cobblestone streets are lined with whitewashed houses sporting terracotta roofs. The shops are piled high with local handicrafts, while in spring the town is ablaze with geraniums, morning glories and bougainvilleas. Obidos is famous for being the site where the 10-year-old Afonso V married his cousin aged 8, the Church of Santa Maria also boasts exquisite 17th-century tiles and a fine Renaissance tomb.

### **Peniche**

Partly enclosed by 16th-century walls, Peniche is almost entirely dependent on the sea. It's fishing industry and port, fishermen, trawlers, and seagulls mark the atmosphere of this town, with its whitewashed houses and narrow streets. No wonder it has excellent fish restaurants, also specializing in seafood and shellfish dishes, and that it affords the visitor facilities for deep-sea fishing.

Tourists are also curious to visit the Fortaleza, a 16th-century fortress, overlooking the sea, that was used as a prison during the repressive former regime that ended in 1974.

## Golf in Portugal

This region is prime golfing territory, with no less than 12 first class courses all within easy reach. Amongst the best, and in addition to Praia Del Rey, are Penha Longa - beautifully located and providing a superb test with spectacular views, the stunning Oitavos and The Golden Eagle. The quality and variety of courses is virtually unrivalled within Portugal. The courses are far quieter than the busy Algarve and we have access to agencies who offer greatly discounted green fees. The new Paimogo golf resort will be created near by.

### Local Courses :

- Praia Del Rey
- Penha Longa
- Beloura
- Oitavos
- Golden Eagle



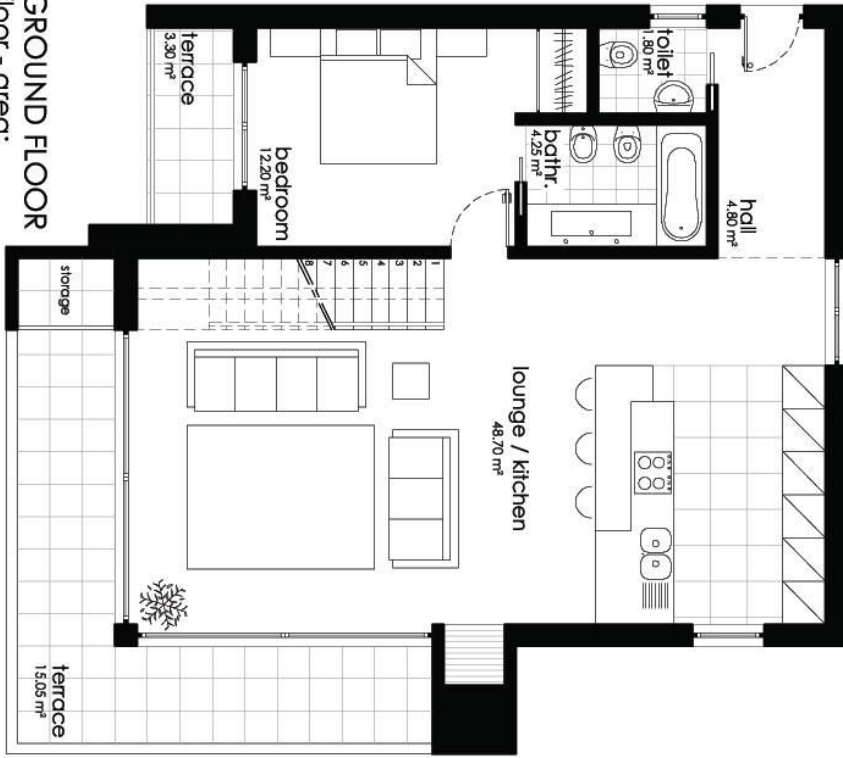
Praia Del Rey is truly one of Portugal's finest and provides a magnificent, championship standard test. This par 72 6662m course has a mix of true links and woodland holes combining perfectly to present a memorable experience. The coastal holes in particular provide a breathtaking setting.

Casa Pela Praia is located 250m from the first tee and practice facilities, with driving range, two putting surfaces, bunker / pitching green.

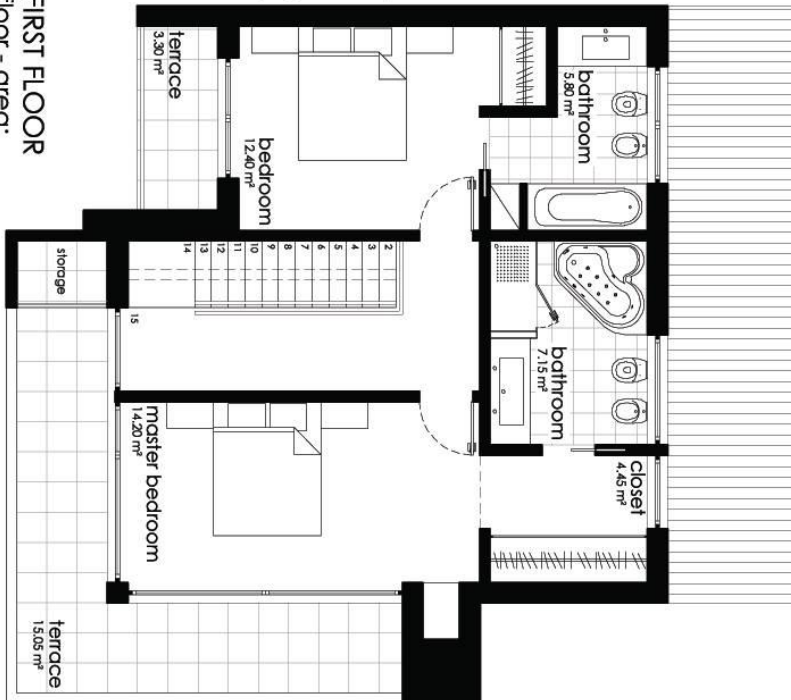
Full details of these courses as mentioned and others are available here.

- <http://www.portugalgolfcourses.com>
- <http://www.quintadamarinha-oitavosgolfe.pt>
- <http://www.caesarparkpenhalonga.com>
- <http://www.eav.pt>
- <http://www.camin.pt>
- <http://www.aroeira.com>
- <http://www.atlanticogolfehotel.com>

# FLOORPLANS



**GROUND FLOOR**  
 floor - area:  
 85.30m<sup>2</sup> area + 18.35m<sup>2</sup> terrace



**FIRST FLOOR**  
 floor - area:  
 69.30m<sup>2</sup> area + 18.35m<sup>2</sup> terrace

## WHAT TO DO NOW

ARRANGE YOUR INSPECTION TRIP WITH US

PRE RESERVE A PROPERTY IF REQUIRED

TALK TO OUR MORTGAGE SPECIALISTS **MHI** IF FINANCE IS REQUIRED

VISIT THE SITES ON A 2-3 DAY INSPECTION VISIT, MEET THE DEVELOPERS AND SEE THE AREA

INSTRUCT A LAWYER

SECURE YOUR CHOSEN PROPERTY WITH A 6,000 EUROS DEPOSIT

PAY 25% OF THE PURCHASE PRICE WITHIN 30 DAYS

SELECT A FURNITURE PACKAGE IF REQUIRED

WE LOOK FORWARD TO SECURING A SUPERB PROPERTY FOR YOU.